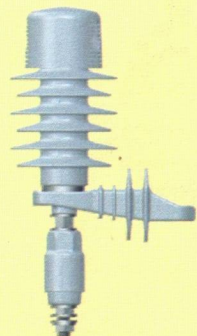




SIEMENS
energy

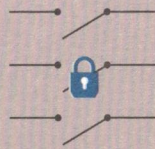
3EK8 xxx-xxxx



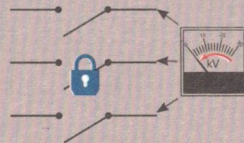
1



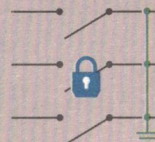
2



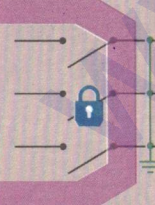
3



4



5



DE

5 Sicherheitsregeln

Vor Beginn der Arbeiten:

1. Freischalten
2. Gegen Wiedereinschalten sichern
3. Spannungsfreiheit feststellen
4. Erden und kurzschließen
5. Benachbarte, unter Spannung stehende Teile abdecken oder abschränken

EN

5 safety rules

Before any work starts:

1. switch off and isolate
2. secure against reclosing
3. verify that equipment is dead
4. earth and short circuit the equipment
5. cover or fence off nearby live parts

ES

5 reglas de seguridad

antes de iniciar los trabajos:

1. poner el sistema fuera de línea (aislarlo)
2. asegurarlo contra reconexiones
3. cerciorarse de la ausencia de tensión
4. ponerlo a tierra y cortocircuitarlo
5. tapar o vallar las partes adyacentes bajo tensión

PT

5 regras de segurança

antes de iniciar quaisquer trabalhos:

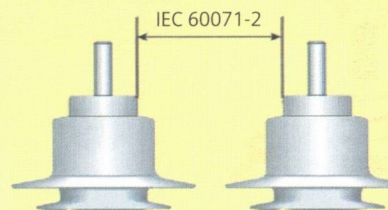
1. desenergizar a linha
2. prevenir religamento
3. verificar desenergização
4. aterrar e curto-circuitar o equipamento
5. isolar partes vizinhas energizadas

FR

5 règles de sécurité

avant le début des travaux:

1. mettre hors tension
2. condamner les appareils
3. vérifier l'absence de tension
4. mettre à la terre et court-circuiter
5. écouver les parties actives voisines ou en barrer l'accès



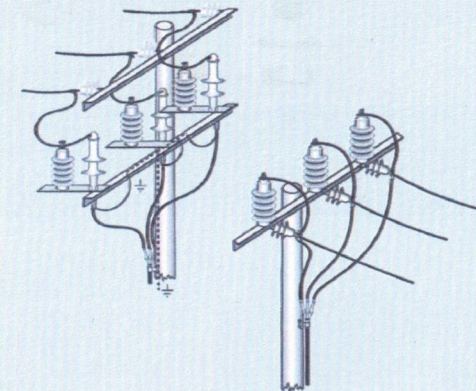
Ø 4 - 7,5 mm



Ø 7,5 - 16 mm



> Ø 7,5 mm



IEC
60099-4



ISO 9001

SIEMENS
energy

D-13623 Berlin

arrester.energy@siemens-energy.com

3EK8

3HH 928 00193 150 D

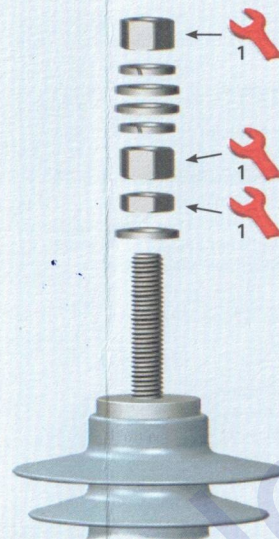
B01/02



M16



M30



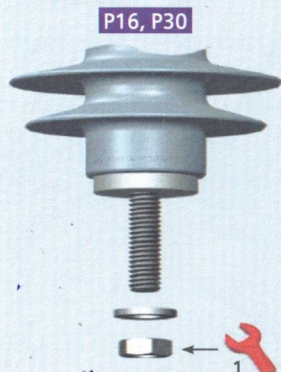
M50, M60, M70



M45



M81



P16, P30



P12, P31



P50, P60, P70



P13

